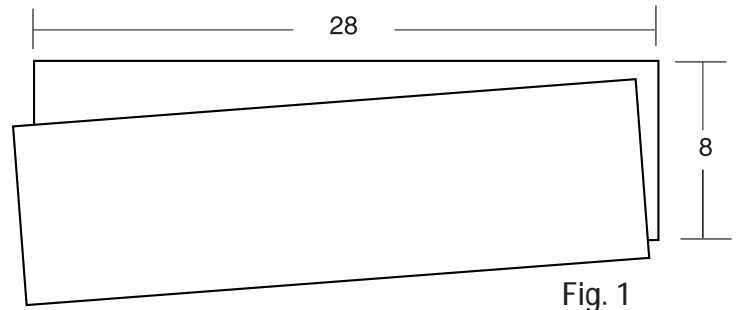


STONES CRAYONS

Punch Registration System

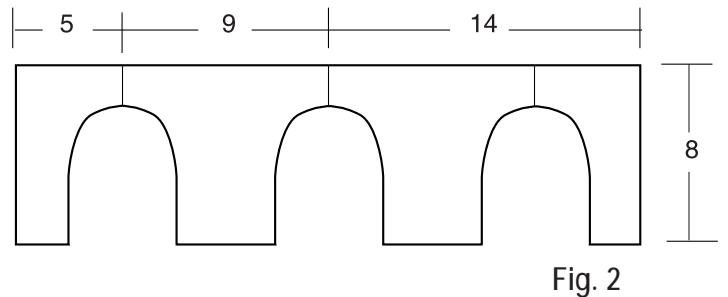
MATERIALS LIST FOR PUNCH REGISTRATION SYSTEM

- 1 piece 8 x 28 x 1/2 plywood
- 1 piece 8 x 28 x 1/4 inch plywood
- 3- Office 2 hole punches
- 3- 2 inch plastic plugs from mailing tubes
- 6- Mounting Screws with wing nuts for punches



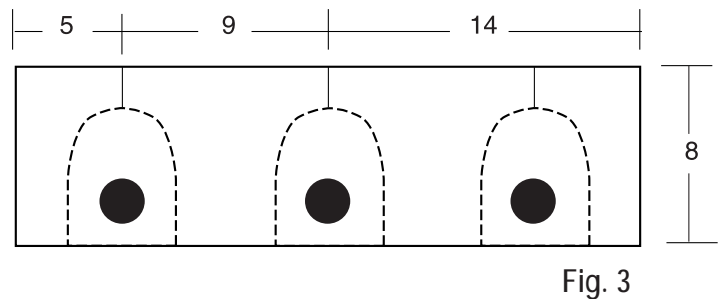
ON THE 1/2 INCH PLYWOOD:

1. Mark Center of Board
2. Mark out 9 inches on each side
3. Line up center of punch and trace outlines
4. Cut out sections for punches to fit into. Insure the punches fit into cutouts before proceeding. (See Fig. 1,2)



ON THE 1/4 INCH PLYWOOD:

1. Line up as base for 1/2 inch top board.
2. Glue or screw bottom to top board, clamp and leave overnight.
3. In the 1/4 inch plywood drill a 2 inch holes under each punch cutout. (These 2 inch holes will hold a plastic plug from a mailing tube and allow for removal of punched chips.) (See Fig. 3)
4. Mount punches in place using screws and wing-nuts trough holes in the back of the punches. (See Fig. 4)



FINISHING

Plywood can be painted or finished as desired.

TIP

Be sure to punch the plate from the top and the paper from the back. This will insure the holes will match up.

